

terra polaris, Postboks 6, N-9171 Longyearbyen, Spitzbergen,  
[info@terrapolaris.com](mailto:info@terrapolaris.com), Tel. 0047-79021068  
Information Office: Am Boxberg 140, D-99894 Leina  
0049-(0)3622-901633

# Novaya Zemlya & Franz Josef Land

## M/V AKADEMIK SHOKALSKIY

July 26 (Arkhangelsk) - August 06 2011 (Murmansk)

## Aurora Expeditions



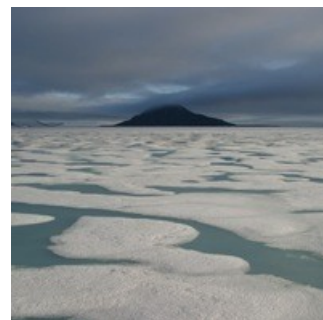


# Aurora Expeditions on MV AKADEMIK SHOKALSKIY:

## Voyage to the End of the Earth: The White Sea & Franz Josef Land

### Overview

Voyage to the End of Earth offers a rare chance to visit Novaya Zemlya and Franz Josef Land. Access to these Arctic wonderlands has been restricted for decades, due to their military sensitivity. The highly productive Kara Sea attracts diverse marine life, including walrus, whales and seals. Explorers have been drawn to this area for centuries, searching for both the North Pole and a maritime route to the east. Our own explorations take us to historic huts and abandoned research stations.



**Name:** Voyage to the end of the Earth - 14 Day Voyage  
**Dates:** 26-Jul-11 to 08-Aug-11  
**Embark:** Archangelsk, Russia  
**Ship:** Akademik Shokalskiy  
**Extra Activities:** Kayaking

### Tour Prices, in US-Dollars:

DECK	CABIN	PRICE
Main	Triple, shared facilities	US\$ 8,080
Main	Twin, shared facilities	US\$ 9,450
Upper	Quad, private facilities	US\$ 9,885
Upper/Captain's	Twin, private facilities	US\$ 10,985
Captain's	Mini Suite, private facilities	US\$ 12,175
Captain's	Suite, private facilities	US\$ 13,300

Prices quoted are per person in US dollars, based on twin share. Single costs are 1.7 times the twin share rate. Fuel surcharge may apply in the event of significant fuel price increases.

### INCLUDED:

Ship accommodation and use of all public areas (open to all passengers).  
All meals on board the ship.  
All shore excursions from the ship.  
Lectures, videos, slide and film shows and guide services.  
Medical services, basic infirmary on board.  
Port taxes and port charges imposed by government authorities.  
Pre and post land arrangements as outlined in voyage itinerary.  
Pre-departure information.

### NOT INCLUDED

Air transport and airport transfers not mentioned above.  
Visa, passport and vaccination charges and airport departure taxes.  
Hotels and meals not included in ship cruise itinerary.  
Laundry, postage, personal clothing, medical expenses, personal travel insurance, bar charges and phone calls.  
Emergency evacuation charges.  
Optional end of voyage tips.

### Itinerary

## Day 1

Today you will be met at the airport to enjoy the delights of Archangelsk and Malye Korely, Europe's largest open-air wooden architecture museum. Board Akademik Shokalskiy and depart down the Northern Dvina River and into the White Sea on our inaugural voyage to Franz Josef Land.

## Day 2

Tide and weather dependent, we visit one of the White Sea's Pomor villages. Formerly thriving, then nearly abandoned a decade ago, young people now return to renovate old wooden homes. Morzovets Island offers walking, birding, more fascinating Pomor culture.

## Days 3-5

Sailing north across the ice-speckled Barents Sea, we have a fantastic opportunity to hear the stories of explorers Barents, Nansen, Sedov and many more. Spend time with our enthusiastic crew and staff, watching for Arctic wildlife and distant pack ice.

## Day 6

Mountainous and shrouded in mystery, the Novaya Zemlya archipelago remains one of Russia's most restricted regions. Most lies within a closely guarded military zone, but we head north, some of the first visitors to Putin's recently extended Arctic National Park. We Zodiac cruise around island bird rookeries, photographing glaucous gulls, Arctic terns, Snowy owls, geese and eider ducks.

## Days 7-11

As we push north to the outer limits of the Barents Sea, an archipelago of 191 ice-covered islands rises from the horizon – Franz Josef Land, the planet's last major landmass to be discovered! Over the next five days we enter a world of exquisite Arctic beauty that few have seen. Uninhabited, bar a few Russian border guards who maintain a presence here, this is the realm of the polar bear, walrus, seals and elusive beluga whales. Summer visitors include kittiwakes, fulmars and gulls. While the archipelago is 85% glaciated, the mostly ice-free shoreline of each island is unique. We may visit explorers' huts on Bell and Hall islands; Nordbrook Island's seabird cliffs; walrus haulouts at Stolichky and Appolonov islands; Hooker Island's abandoned polar research station with its unpredictable polar bear visitors. Marvel at Champ Island's unique stone spheres up to 3 m in diameter.

## Days 12-13

As we sail southwest across the Barents Sea, we have time for lively discussions about all we've seen, to enjoy the beauty of high Arctic light, and top up our tally of whales, seals and seabirds.

## Day 14

We enter Kola Bay for an early morning arrival in Murmansk - largest city north of the Arctic Circle. After bidding our crew and staff goodbye, you will be taken to your hotel and on a city tour before being transferred to the airport for your early morning flight.

## Extra activity: Kayaking

Kayaking in the far-flung corners of the world is an experience guaranteed to refresh your soul. Led by experienced guides, paddling in small groups allows us the opportunity to paddle between ice floes, brash ice and icebergs of all shapes and sizes as well as easy and intimate access to beautiful coastlines in some of the world's most remote destinations. Viewing wildlife from a kayak has many advantages, with our quiet presence allowing us to get closer to animals while still keeping a comfortable distance from them. Paddling sturdy, maneuverable and reliable craft is an exciting, low impact way to explore Antarctica, the Russian Coast and the High Arctic. Sea kayaking in the polar regions requires an adventurous attitude as the wind and elements play an important role. You should be an intermediate paddler, active in the outdoors and have an adventurous spirit. Although you do not have to be an expert or know how to roll, you should be able to get in and out of your kayak without assistance and you should have practiced a wet exit and assisted re-entry before the trip. Even if your experience is limited, we'd encourage you to call us to discuss your suitability. There is often ample time to gain the required experience before you depart.

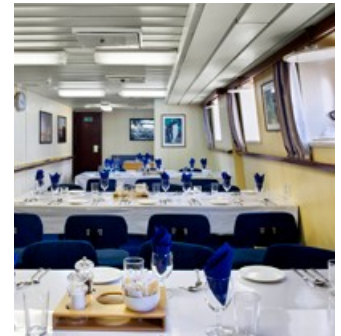


## The vessel: MV AKADEMIK SHOKALSKIY

Aurora Expedition's is pleased to present *Akademik Shokalskiy* – our newest vessel and sister ship to our famed *Polar Pioneer*. Designed and built as an ice-strengthened research ship in Finland in 1982, she has explored much of the world's polar waters. Fully refurbished in 1998, the ship provides simple yet comfortable accommodation for a maximum of 54 passengers. Her excellent reputation for polar expedition cruising is due to her strength, manoeuvrability and size.



Our highly experienced Russian captain and crew are among the best ice navigators in the world. The spacious bridge is always open to us and decks are ideal for viewing the dramatic polar landscapes and wildlife. All cabins have outside portholes and ample storage space, whilst the public areas include a lounge bar, a lecture room/library, sauna, medical office and dining rooms. Meals are wholesome, delicious and prepared by Western chefs, while Russian stewardesses attend the dining room. The vessel is also equipped with a small fleet of inflatable Zodiacs ensuring easy travel from ship to shore.



### Cabins

**The Captain's Suite:** Double bed in separate room, plus foldout couch that can be used as a single bed; forward and port windows; lounge and table area; fridge; TV; video player and private bathroom, with shower, toilet and washbasin.

**The mini Suite:** Double bed in a separate room, foldout couch that can be used as a single bed, TV, DVD player, windows, desk, and private bathroom with shower, toilet and washbasin.

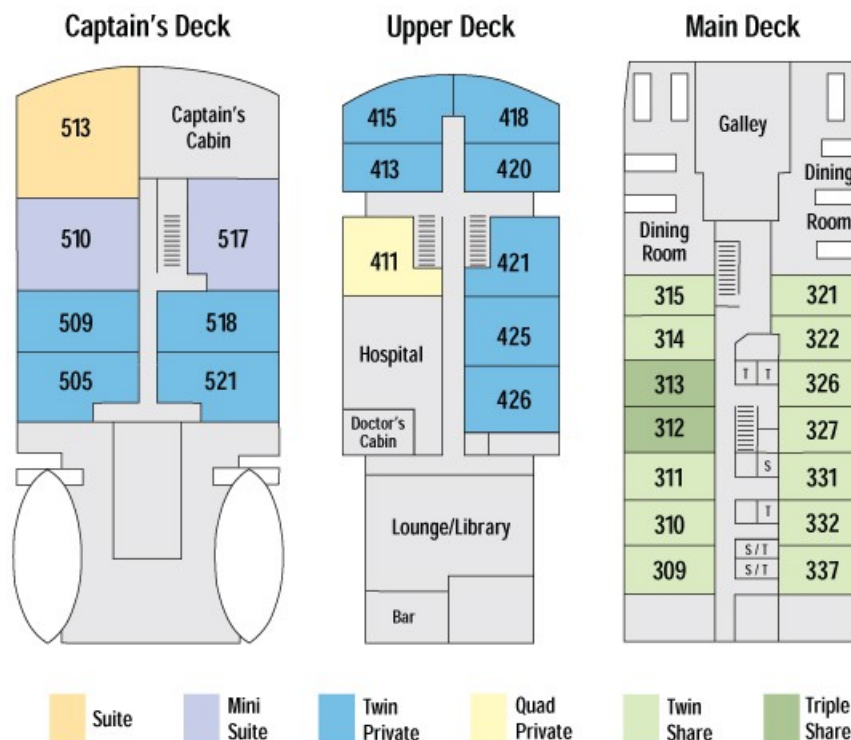
**Quad Private:** Two upper and lower bunks, window and private bathroom with shower, toilet and washbasin. Suitable for a family of four or a group of friends travelling together.

**Twin Private:** Two bunks, a desk, windows and private bathroom with shower, toilet and washbasin.



**Twin Public:** Two bunks, desk, small washbasin, ample storage & hanging space, couch and a porthole. Showers and toilets are close by and are shared with other Main Deck cabins.

**Triple Public:** Two lower bunks and one upper bunk, desk, small washbasin, ample storage and hanging space and portholes. Showers and toilets are close by and shared with other Main Deck cabins.



## Terms & Conditions

### Cancellations

If it becomes necessary to cancel your holiday, you must notify Aurora Expeditions immediately in writing. Cancellation will take effect upon receipt by Aurora Expeditions of your written notice. If cancellation takes place more than 90 days prior to departure, a cancellation fee of \$500 per person will be payable by you. If cancellation takes place less than 90 days prior to departure, you will be required to pay the full cost of the voyage. Personal travel insurance is not included in the voyage price.

WE VERY STRONGLY RECOMMEND THAT YOU TAKE OUT TRAVEL INSURANCE INCLUDING CANCELLATION INSURANCE.

### Delay or Change of Itinerary

This is an expedition to a remote part of the world and we reserve the right to change the itinerary or use of helicopters and zodiacs due to weather conditions, availability of anchorages, wind conditions, political conditions and other factors beyond our control without consulting the passengers. Helicopter images used within this brochure are indicative of models sometimes used by Aurora Expeditions on voyages. The use of zodiacs and helicopters is at the discretion of the expedition leader and no guarantee can be provided for the time available in and access of these facilities.

Aurora Expeditions and/or the ship's master may for any reason change the date of departure or conclusion of the tour, the scheduled point of departure for the tour, omit or change any scheduled stop on the tour or change the scheduled place of conclusion for the tour whether before or after the tour has departed, without prior notice to you. You will have no right to any refund and Aurora Expeditions will have no obligation to you or be liable for any loss, consequential damages, expenses, loss of time or enjoyment or inconvenience in respect of such changes. Aurora Expeditions reserves the right to cancel any tour prior to departure in which case any payment made by you will be refunded in full and you will not be entitled to make any further claim for compensation or damages, for any loss, consequential damage, expenses, loss of time or inconvenience which may result from such cancellation.

### Trip Costs

Trip costs are based on ground costs, air fares and exchange rates at the time of printing. While we try our utmost not to increase our prices, sometimes it is outside our control. We reserve the right to amend our prices. It should only alter in the event of significant surface increases and/or marked fluctuations in the \$US exchange rate upon which the land content is based or massive fluctuations in the fuel costs on which the cruise is based. Any increases in price must be paid by you before the departure date.

### Responsibility: This is very important. Please read carefully

By my signature as set forth on the booking form I also acknowledge and confirm the following:

I waive any and all claims I may now and in future have against, and release from all liability and agree not to sue. Aurora Expeditions and its officers, employees, guides, agents or representatives (collectively its staff) or the licensor for any personal injury, death, property damage, or loss sustained by me as a result of my participation in an adventure trip with Aurora Expeditions, due to any cause whatsoever, including without any limitation, negligence on the part of Aurora Expeditions, its staff or licensor. I am aware that your adventure trip, in addition to the usual dangers and risks inherent has certain additional dangers and risks, some of which may include: physical exertion for which I may not be prepared, weather extremes subject to sudden and unexpected change, remoteness from normal medical services, evacuation difficulties if I am disabled.

I accept all the inherent risks of the proposed adventure trip and the possibility of personal injury, death, property damage or loss resulting there from.

I acknowledge that the enjoyment and excitement of adventure travel is derived in part from the inherent risks incurred by travel and activity beyond the accepted safety of life at home or work, and that these inherent risks contribute to such enjoyment and excitement, being a reason for my participation.

I agree that if I suffer injury or illness Aurora Expeditions can, at my cost, arrange medical treatment and emergency evacuation service, as Aurora Expeditions deem essential for my safety.

In entering into this Agreement, I am not relying on any oral, written or visual representations or statements by Aurora Expeditions or its staff or any other inducement or coercion to go on the adventure trip, hence, only of my own free will.

I confirm that I am over the age of 18 years and that I have read and understand the terms and conditions of contract and this Agreement prior to signing it and agree that this Agreement will be binding upon my heirs, next of kin, executors, administrators and successors. I agree that this Agreement shall be governed in all respects by and interpreted in accordance with the law of New South Wales Australia.

## How to prepare

To ensure you have an enjoyable and safe expedition we have developed some important pre-departure information to help you prepare for your voyage. Our reservation staff will be happy to answer any questions you may have. Before you depart for your expedition we will send you a detailed pack including your itinerary, travel documents and any other essential information relevant to your voyage.

### Is your passport valid?

Your passport will be required to have validity that will extend to six months **after** the date of your return.

### Visa arrangements?

Your visa arrangements are your responsibility. Foreigners entering Russian Federation require a valid visa. A tourist visa is issued for a period of 30 days. Please refer to appropriate Consulate in a country of your residence for details.

### Travel insurance?

All passengers are required to provide travel insurance details including policy number and emergency contact number to Aurora Expeditions prior to departure. We strongly recommend insurance coverage that includes emergency medical evacuation from the vessel.

### Emergency contact details?

So that you can be contacted in the case of an emergency, remember to provide your family or friends with a copy of your travel documents as well as Aurora Expeditions' and your Ship's contact numbers.

Remember to pack any valuables or essential items such as medication in your hand luggage to avoid issues in the case of lost baggage.

## Agency for bookings / Agentur für Buchungen:



**terra polaris – Specialised Agency for Polar Travel / Spezialagentur für Polarreisen**

Address Company Seat / Adresse Firmensitz:

Postboks 6, N-9171 Longyearbyen, Spitsbergen, Tel. (+47) 79021068

Internet: [www.terrapolaris.com](http://www.terrapolaris.com),

e-mail: [info@terrapolaris.com](mailto:info@terrapolaris.com)

**terra polaris – Information Office Central Europe / Informationsbüro Mitteleuropa**

Am Boxberg 140, D-99894 Leina, Tel. (+49) (0)3622-901633

**Please request the special booking form for this voyage**

**Bitte fordern Sie das spezielle (englische) Anmeldeformular für diese Reise an !**